

SD card exchange

In date of: 07.01.2019

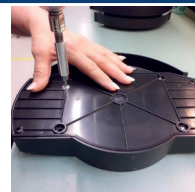
Supported devices: Solar-Log 250/300/1200/1900/2000.

Minimal firmware version: 3.6.0 or newer.

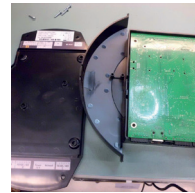
Do not replace in connection with error: SD-Boot Error E1.

Procedure

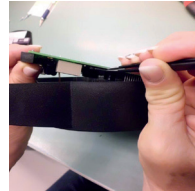
1. Observe ESD protective measures.
2. Remove the wiring.
3. Place the device with the front side down on a level, clean (non-scratching) surface.
4. Unscrew the four screws on the back side of the housing (use proper tools).



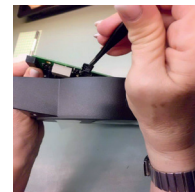
-
5. Remove the plastic cover.



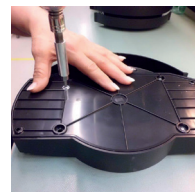
-
6. Without lifting up the PCB more than max. 1cm on the power plug side, remove the SD card from the (front) underside. The SD card can be released from its holder by pushing it gently from the side and then be pulled out. Be careful that no pressure is exerted on the connector to the LCD. Otherwise the flat cable could be torn from its fixture, which is very difficult to connect again correctly.



-
7. Insert the new SD card into the SD card holder and lock it by pressing it on the side.



-
8. Place the back cover on again.
 9. Screw back on.



-
10. After closing the device, a screw must be closed with the sealing wax supplied by us.
 11. Flip the device over and power the device up.
 12. Wait for the update to complete itself.
-

